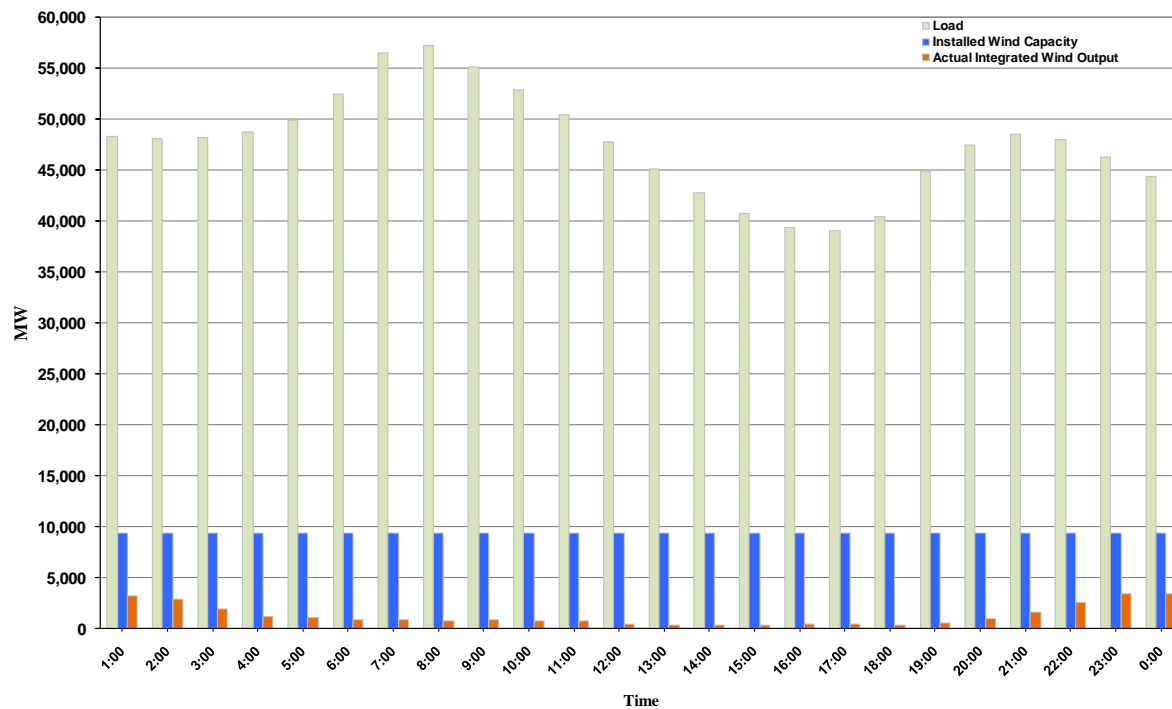




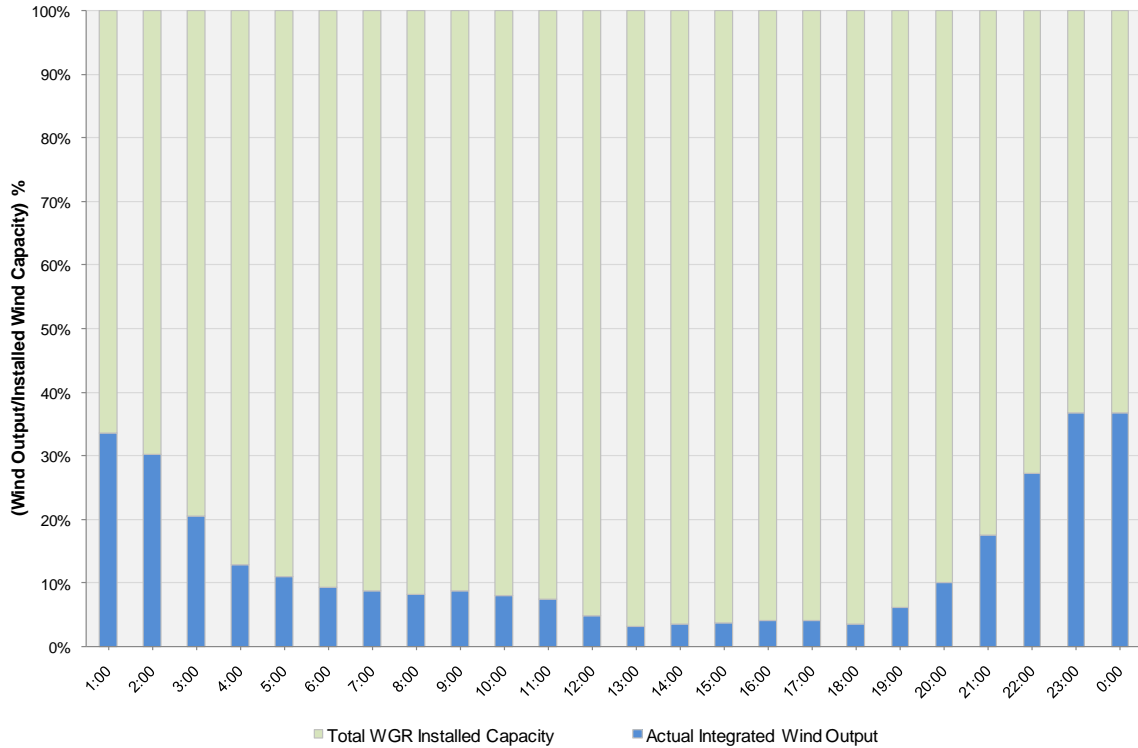
## ERCOT Grid Operations Wind Integration Report: 02/10/11

New Record Winter Peak	<b>57,283 MW</b>
Load Peak Hour	<b>08</b>
Wind Record 12/11/10	<b>7,227 MW</b>
Max Wind Value	<b>3,622 MW</b>
Wind Peak Hour	<b>22:55:32</b>
Wind Integration %	<b>7.97</b>

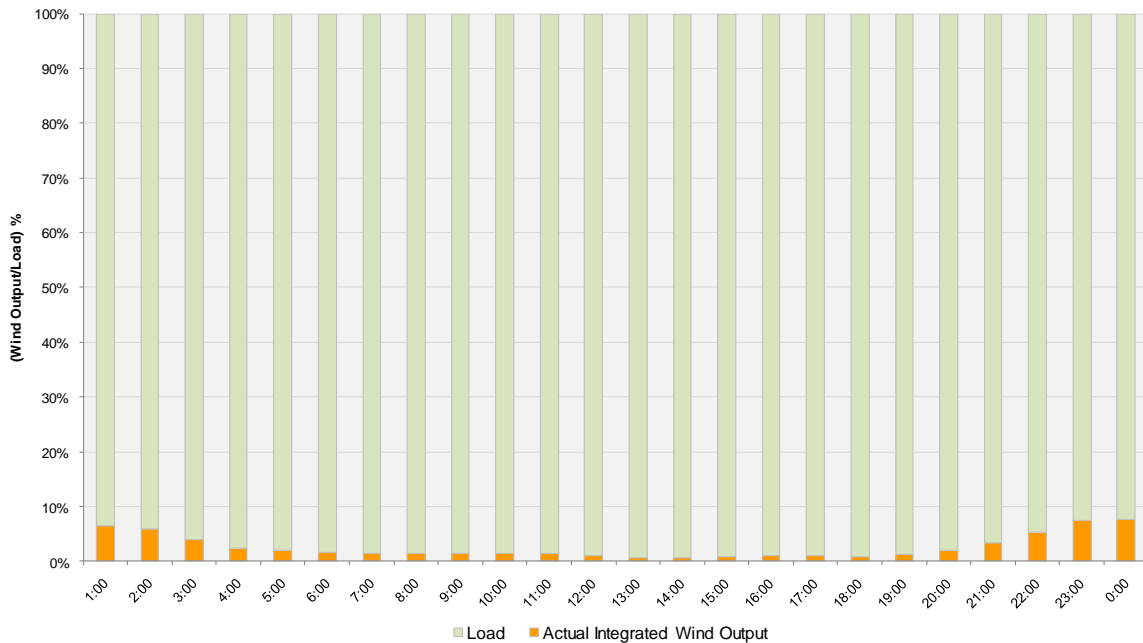
Hourly Average Actual Load vs. Actual Wind Output  
02-10-2011



**Actual Wind Output as a Percentage of the Total Installed Wind Capacity**  
**02-10-2011**



**Actual Wind Output as a Percentage of the ERCOT Load**  
**02-10-2011**



ERCOT Load vs. Actual Wind Output 2/3/2011 - 2/10/2011

